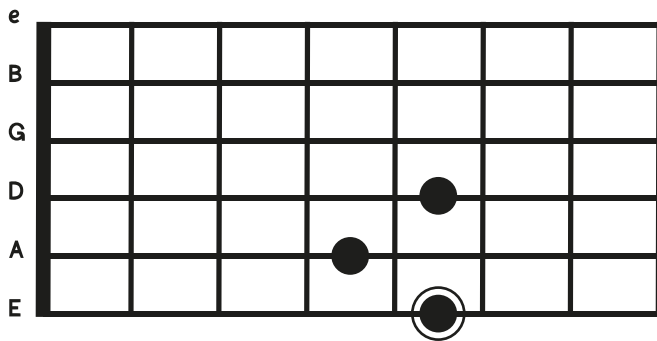


# Walking Bass lines combined with Dominant 7th Chords

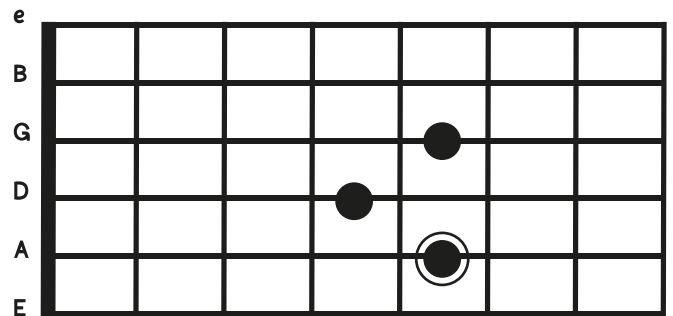
Keeping the Dominant 7th chordshape in your hand at all time  
 Walk your bass (root) note around the fret board in a quarter note feel  
 inserting the 7th chord where you see fit.  
 Make sure every bassnote is palm muted and played with your thumb.  
 Get creative!

● = root  
 ● = Scale tone

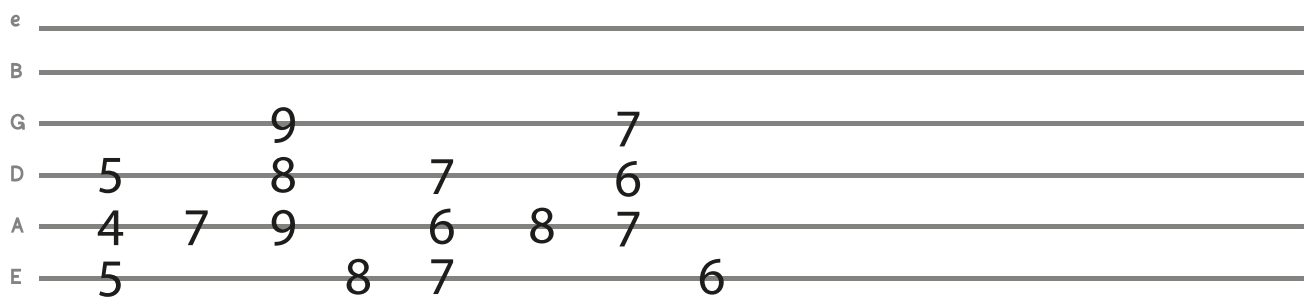
Dominant 7th shape with low E string root



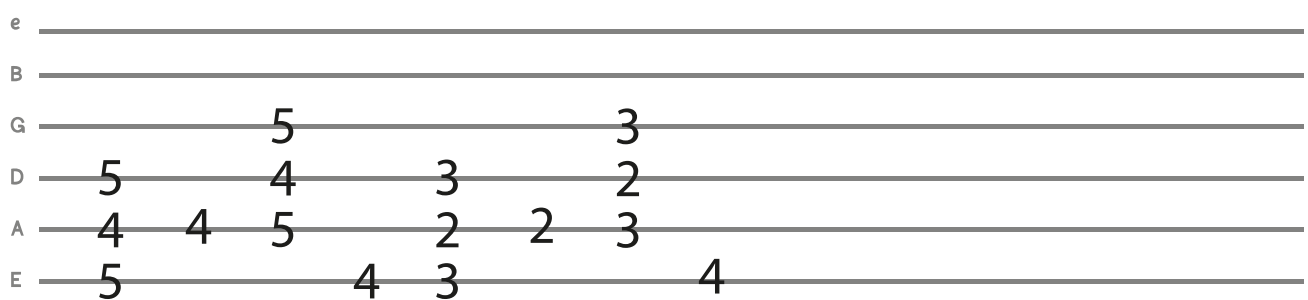
Dominant 7th shape with A string root



Example 1: A7 F#7 B7 E7 loop



Example 2: A7 D7 G7 C7 loop



Example 3: A7 E7 loop

