

try these with E major or G major

A guitar fretboard diagram for the E major chord. The strings are labeled E, A, D, G, B, e from bottom to top. The E string has frets 1, 2, 3, 4, and e. The A string has frets 2 and 4. The D string has fret 4. The G string has fret 2. The B string has fret 4. The e string has fret 1.

A guitar fretboard diagram for the G major chord. The strings are labeled E, A, D, G, B, e from bottom to top. The E string has frets 1, 2, 3, 4, and e. The A string has frets 2 and 4. The D string has fret 4. The G string has fret 2. The B string has fret 4. The e string has fret 1.

A guitar fretboard diagram for the E major chord. The strings are labeled E, A, D, G, B, e from bottom to top. The E string has frets 1, 2, 3, 4, and e. The A string has frets 2 and 4. The D string has fret 4. The G string has fret 2. The B string has fret 4. The e string has fret 1.

A guitar fretboard diagram for the G major chord. The strings are labeled E, A, D, G, B, e from bottom to top. The E string has frets 1, 2, 3, 4, and e. The A string has frets 2 and 4. The D string has fret 4. The G string has fret 2. The B string has fret 4. The e string has fret 1.

A guitar fretboard diagram for the E major chord. The strings are labeled E, A, D, G, B, e from bottom to top. The E string has frets 1, 2, 3, 4, and e. The A string has frets 2 and 4. The D string has fret 4. The G string has fret 2. The B string has fret 4. The e string has fret 1.

try these with Cmajor or Aminor

1 e 2 e 3 e 4 e 1 e 2 e 3 e 4 e

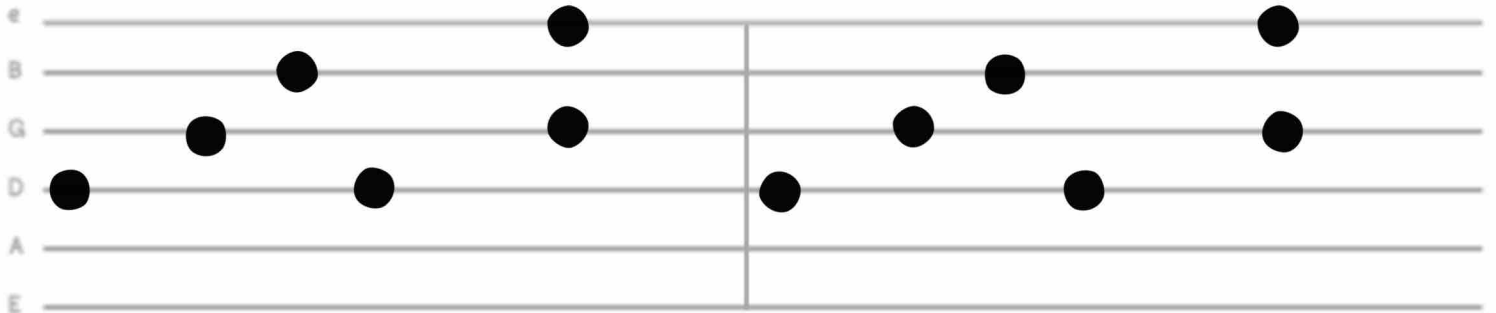
1 e 2 e 3 e 4 e 1 e 2 e 3 e 4 e

1 e 2 e 3 e 4 e 1 e 2 e 3 e 4 e

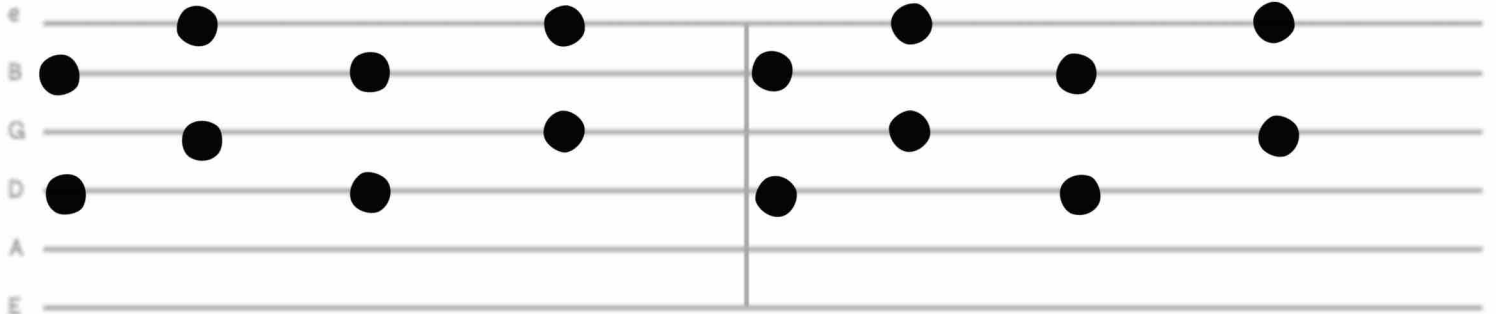
1 e 2 e 3 e 4 e 1 e 2 e 3 e 4 e

1 e 2 e 3 e 4 e 1 e 2 e 3 e 4 e

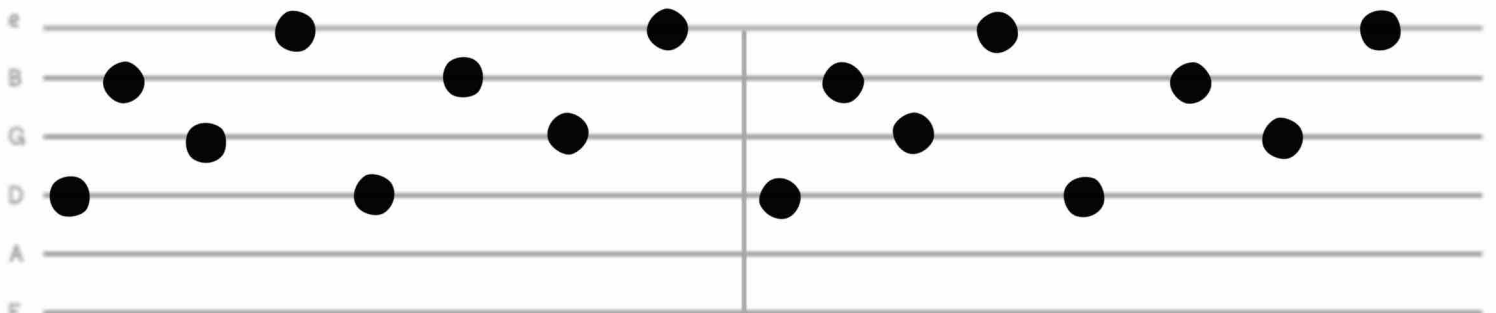
try these with Dmajor or D7



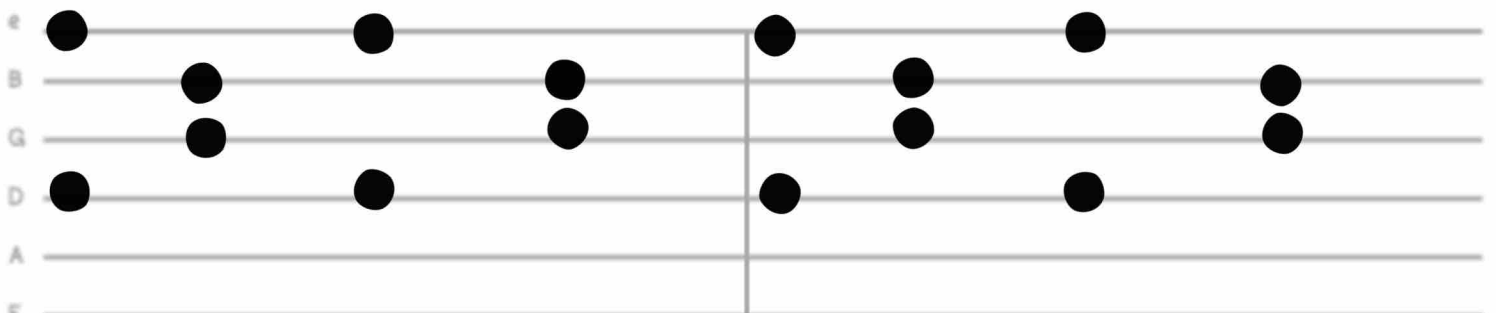
1 e 2 e 3 e 4 e 1 e 2 e 3 e 4 e



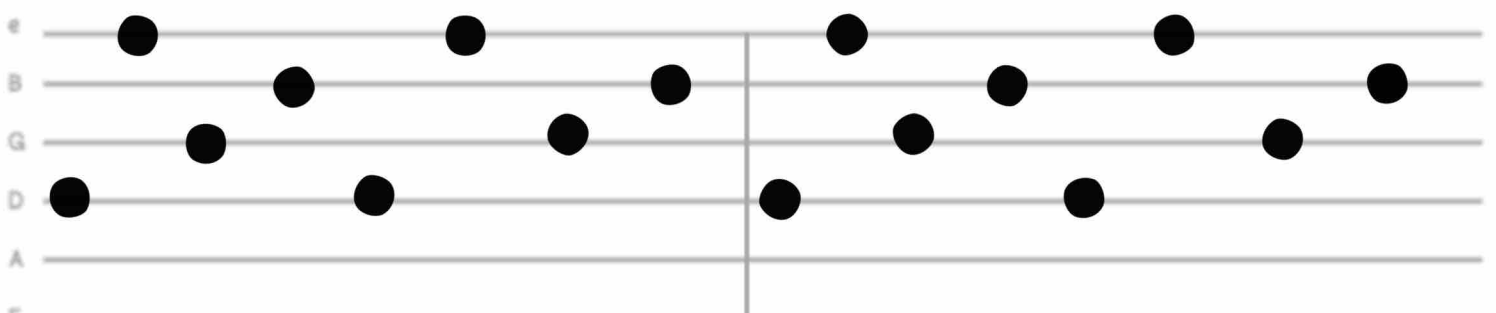
1 e 2 e 3 e 4 e 1 e 2 e 3 e 4 e



1 e 2 e 3 e 4 e 1 e 2 e 3 e 4 e



1 e 2 e 3 e 4 e 1 e 2 e 3 e 4 e



1 e 2 e 3 e 4 e 1 e 2 e 3 e 4 e